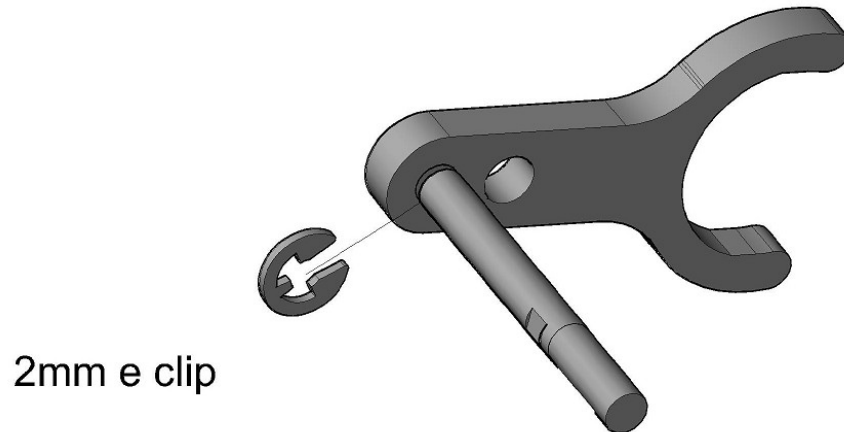


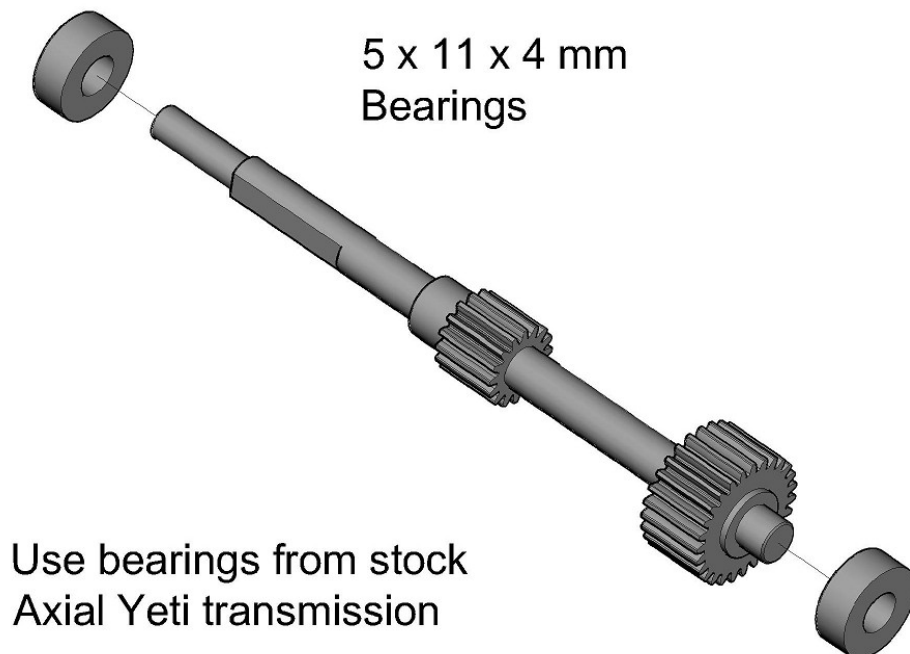
## SSD 2 Speed Conversion for Yeti Assembly Guide

**Note:** The stock Yeti transmission needs to be removed from the chassis and disassembled before starting.

### 1 Shift rod assembly

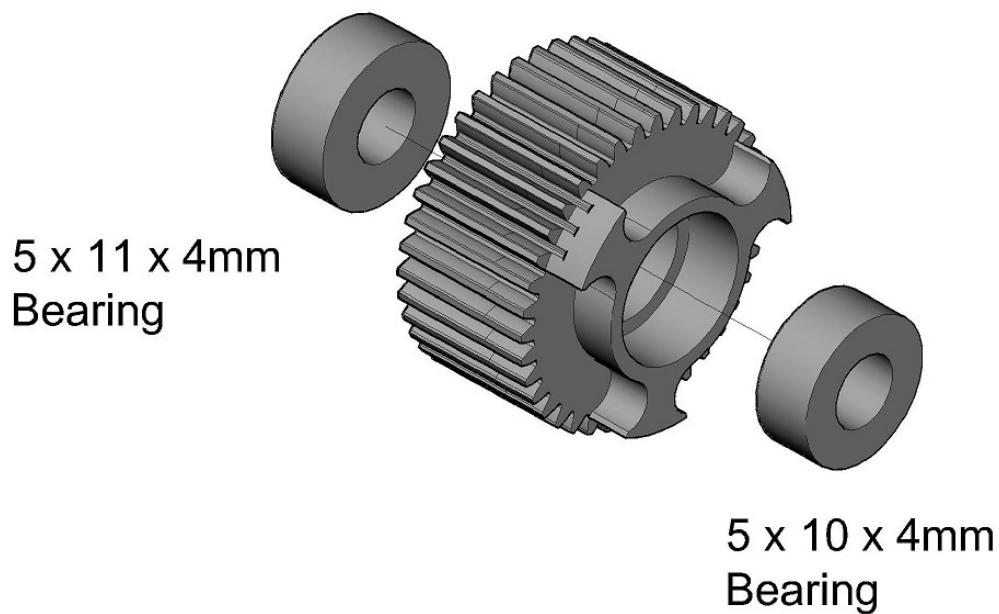


### 2 Install bearings on SSD input gear shaft

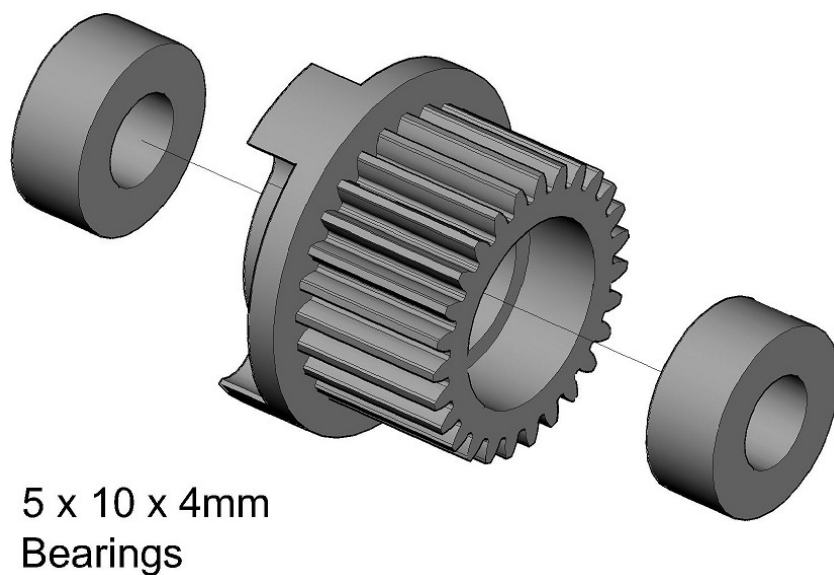


### 3 Install bearings in gears

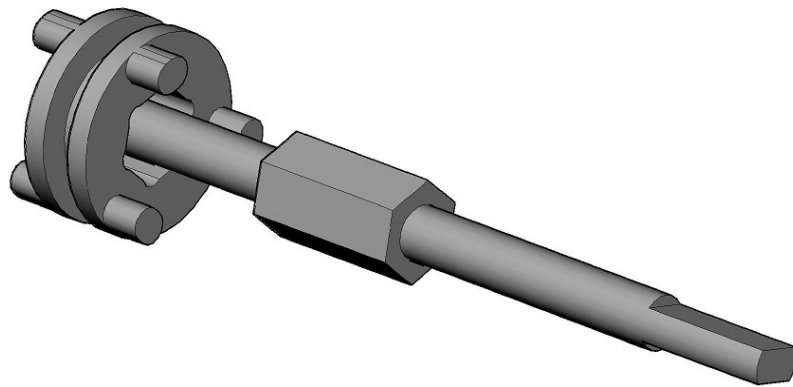
38T gear



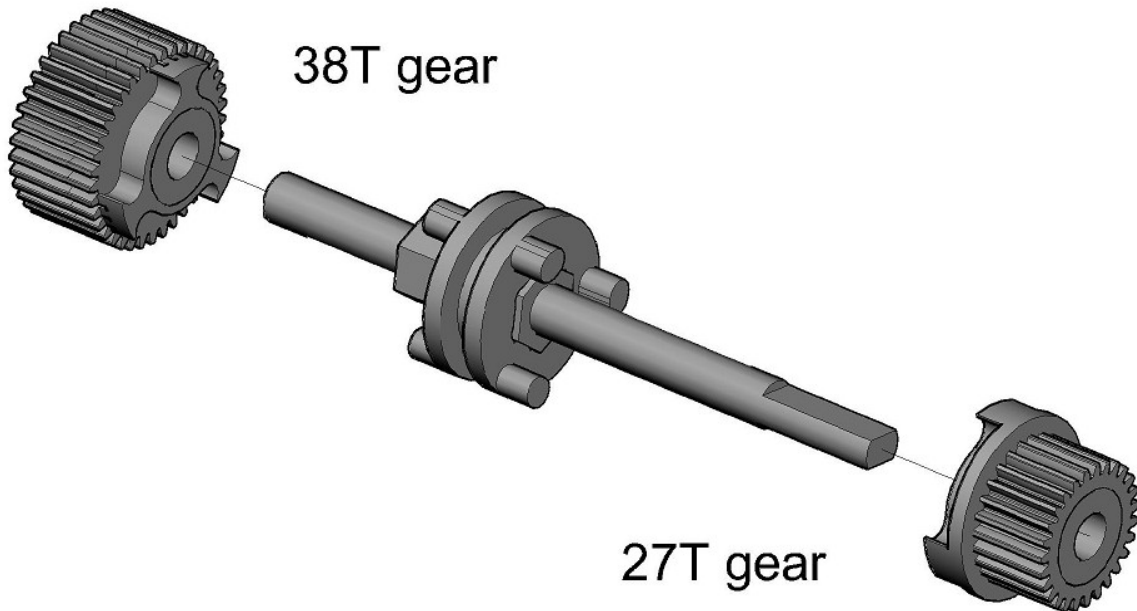
27T gear



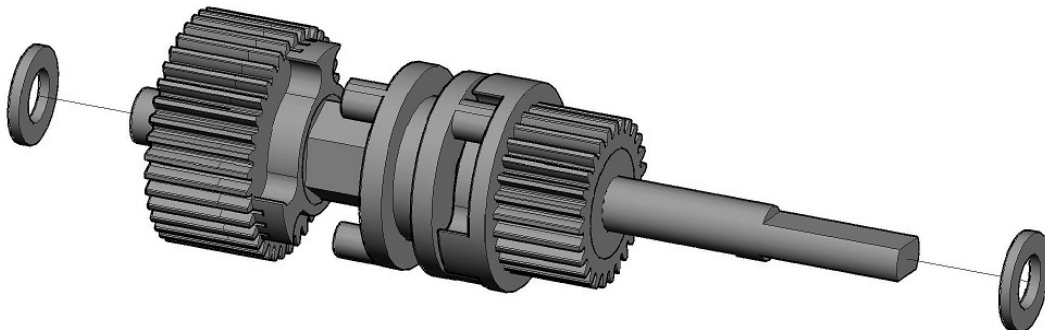
**4** SSD bottom shaft assembly



**5** Install gears

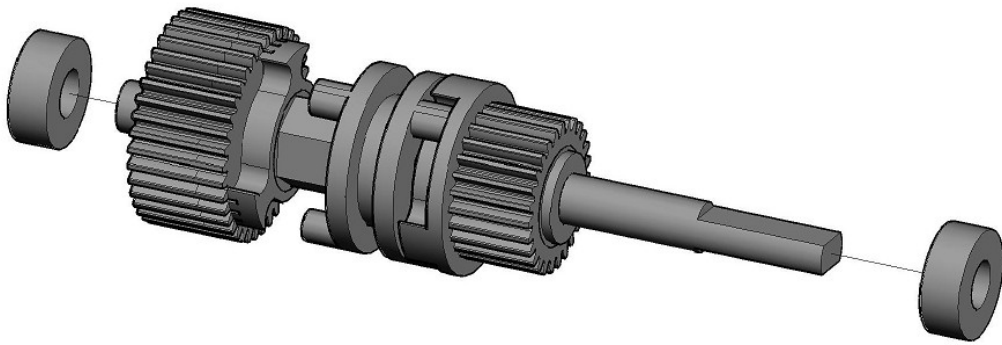


**6** Install washers



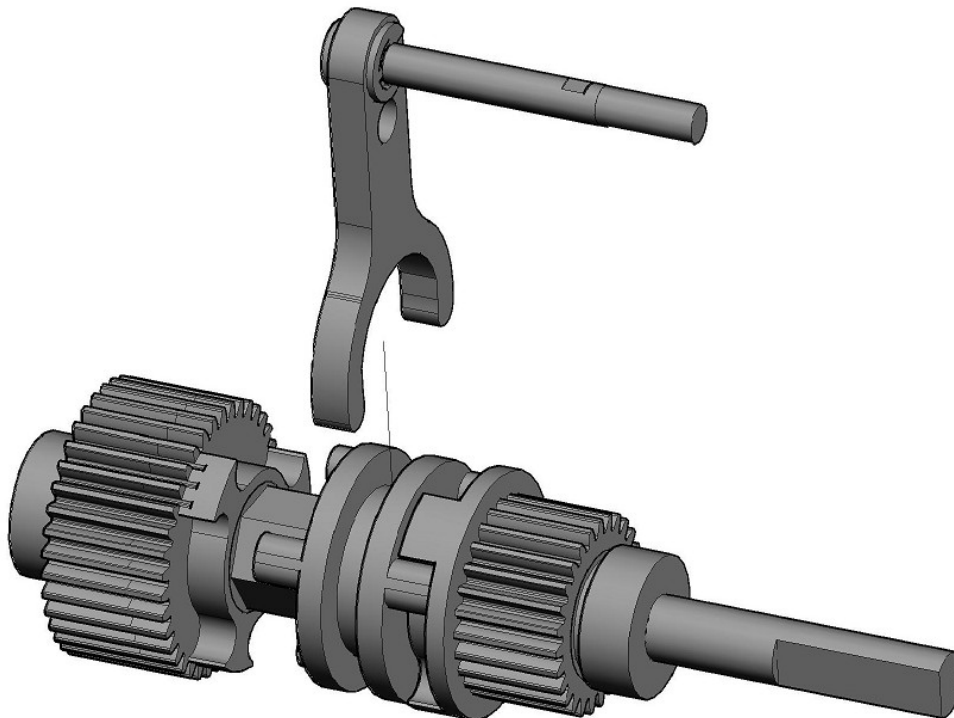
7 Install bearings on shaft

5 x 11 x 4mm Bearings

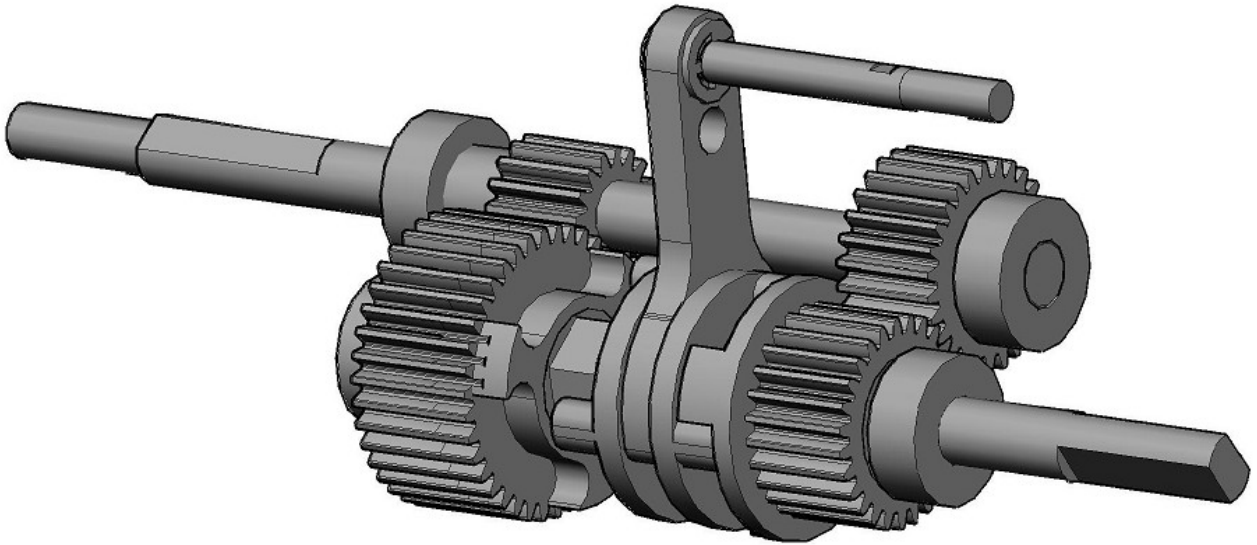


Use bearings from stock Axial Yeti transmission

8 Insert shift fork into assembly



**9** The entire assembly can now be installed in the Axial Yeti transmission case.



The transmission case then needs to be reassembled and installed back into the chassis as shown in the Axial Yeti assembly manual. Use plenty of grease during assembly.

**10** Shift link assembly



Use left over short plastic rod ends from the Axial Yeti box

## 11

In order to complete the conversion the SSD aluminum servo mounts need to be installed on the chassis and a servo installed. The shift link will need to be attached to the transmission shift rod using the hardware provided. The other end needs to be attached to the shift servo (using a servo saver).



**Note:** A 3 channel radio is needed in order to connect the shift servo and change gears.